



80mm Series Printer

Ethernet Configuration

Contents

CONTENTS	1
1、INTRODUCTION	2
2、OBTAIN PRINTER IP	2
3、CONNECT THE PRINTER	2
1、CONNECT DIRECTLY THROUGH ETHERNET CABLE.....	2
2、CONNECT THROUGH NETWORK DEVICE	2
4、MODIFY THE PARAMETERS.....	3
1、PAGE SETUP.....	3
2、CHECKING THE INTERFACES.....	3
3、CHECKING PRINTER STATUS.....	3
4、SETTING THE PARAMETER OF ETHERNET INTERFACE	4

1 INTRODUCTION

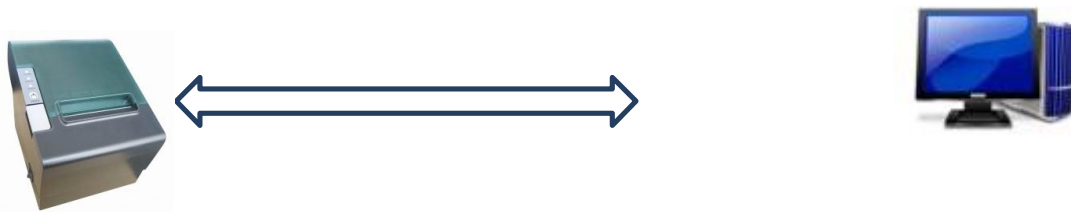
Welcome to use 88 thermal printer's series. The Ethernet parameters of the printers not only could be updated by the WINDOWS utility software that we offered, but also could be updated through the browser (i.e. IE/Firefox).

2 OBTAIN PRINTER IP

Connect the printer with power adapter, press the FEED buttons, and then open the power switch, waiting for 1 to 2 seconds, and the printer would print the demo page automatically, find the IP address on the demo page. The default IP is 192.168.1.87.

3 CONNECT THE PRINTER

3.1 Connect directly through Ethernet cable



192.168.1.xx RJ45----- Ethernet cable-----RJ45 192.168.1.XX Set the IP of printer and computer to be of the same network segment. i.e.: 192.168.1.xx

For example, printer: 192.168.1.87, computer : 192.168.1.123

3.2 Connect through Network device



192.168.1.xx-----Router-----192.168.1.xx

Set the IP of printer and computer to be of the same network segment. i.e.: 192.168.1.xx

For example, printer : 192.168.1.87, router : 192.168.1.1, computer : 192.168.1.123

4. MODIFY THE PARAMETERS

4.1 Page set up

Open the browser, such as Internet explorer, enter the printer IP address, as shown in figure 1, and then press enter.



Figure 1

4.2 Checking the interfaces

Enter the web page, the user could see the related information of printer interface, as shown in figure 2.

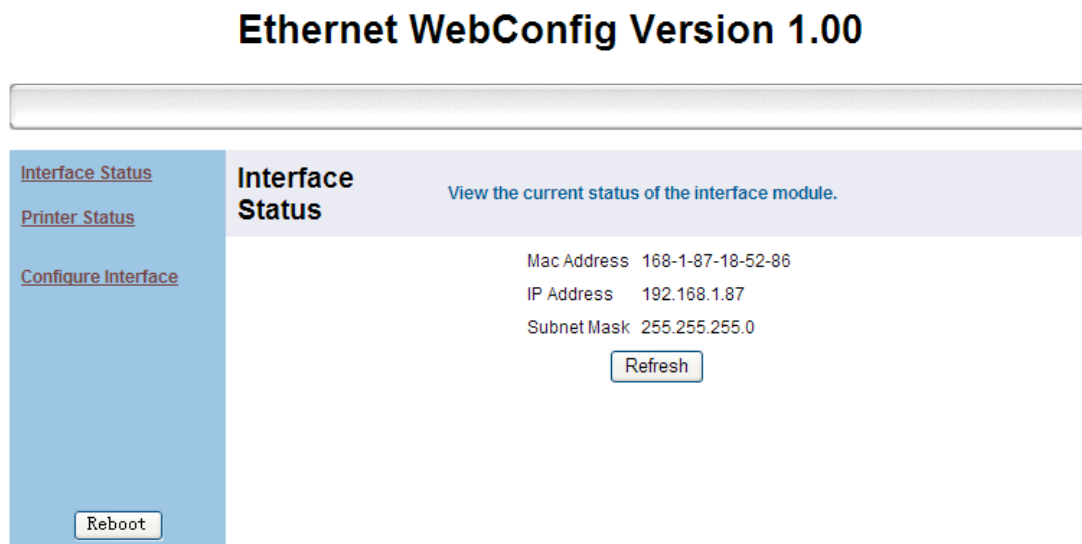


Figure 2

4.3 Checking printer status

Click Printer status links on the left, check the printer status:

- 1、 Cover is open
- 2、 Cutter error
- 3、 Paper end
- 4、 Paper near end
- 5、 Printer Off-Line

As shown in figure 3.

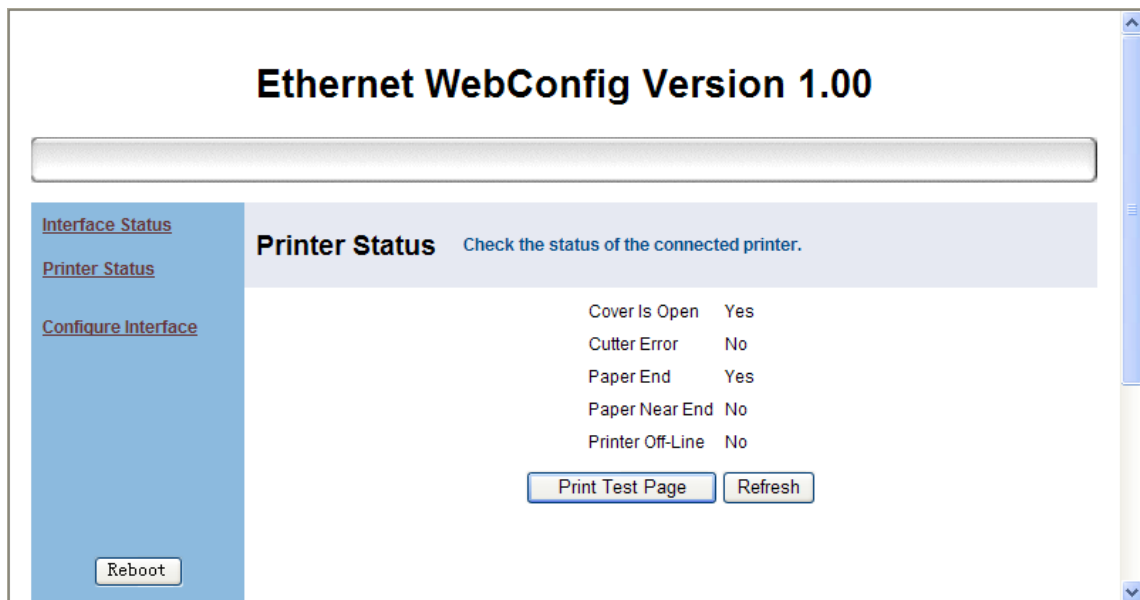


Figure 3

- 1、 Click Printer Test Page and the printer would print a test page
- 2、 Click Refresh to check the updated status of the printer.
- 4、 Setting the parameter of Ethernet interface

Click Configure Interface link, and then enter the page of settings for the Ethernet interface, as showed in figure 4.

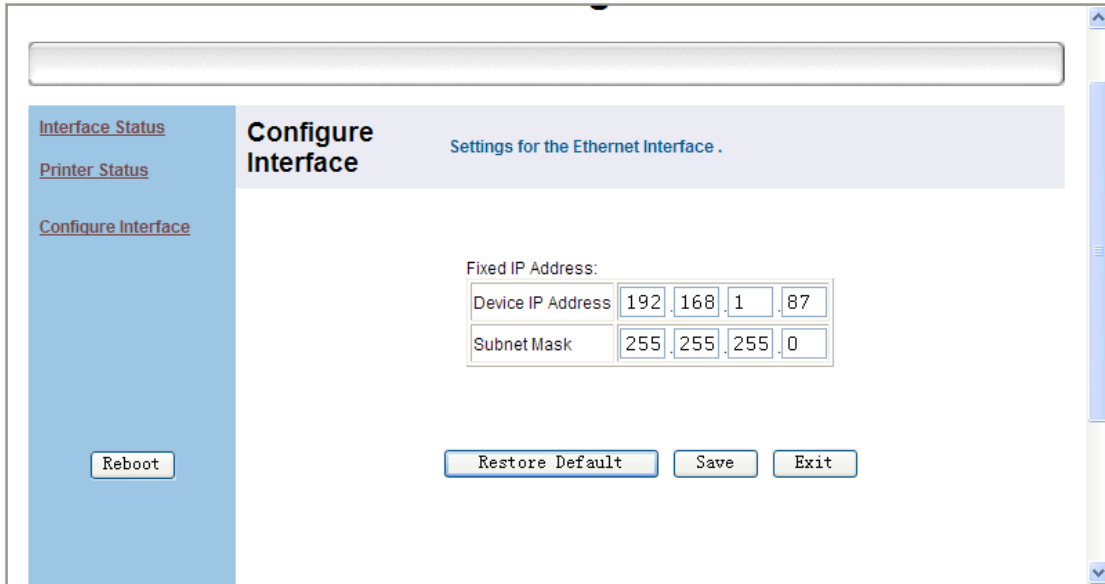


Figure 4

Enter new parameters, as showed in figure 5, New IP: 192.168.1.86, then click Save.

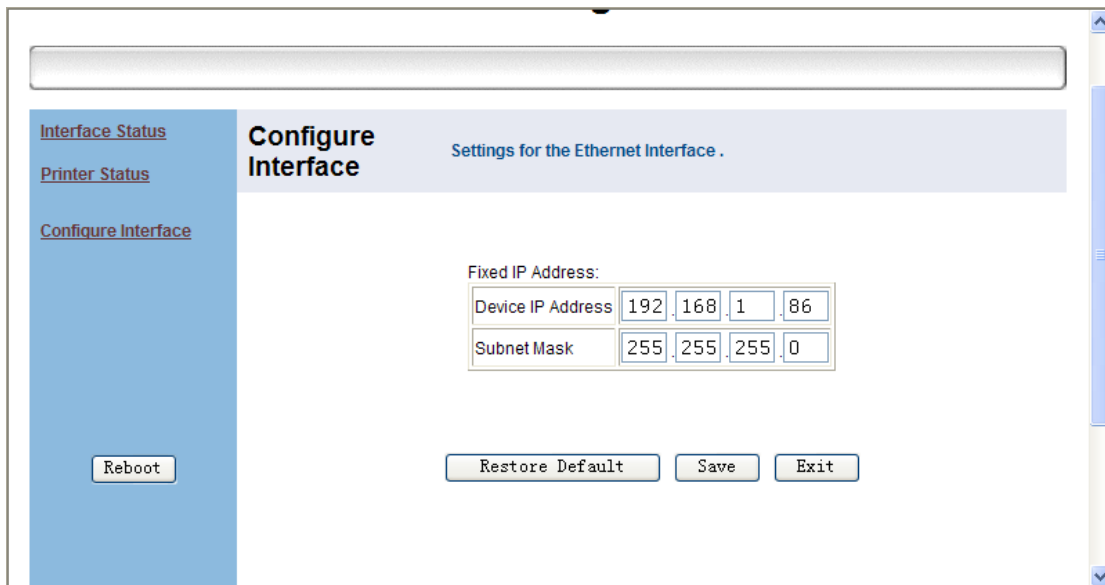


Figure 5

A dialog box popup, as showed in figure 6, choose OK.

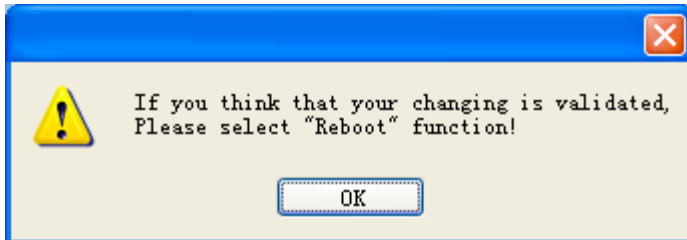


Figure 6

Click Reboot on the left to restart the printer, a dialog box popup, choose OK. As showed in figure 7

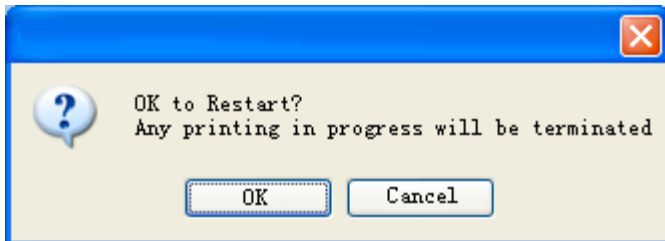


Figure 7

Click YES, then showed as figure 8.

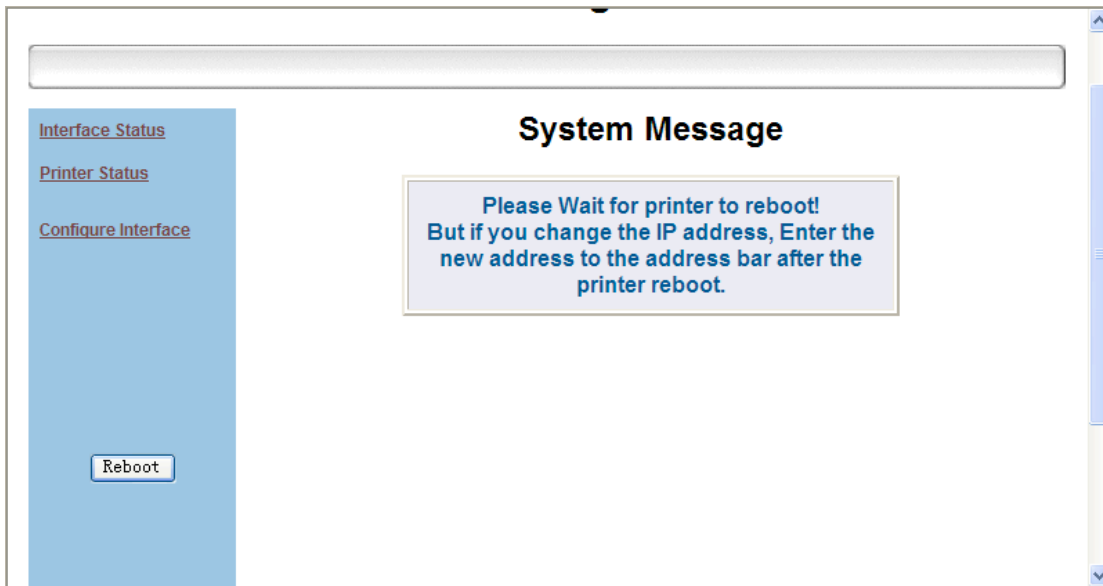


Figure 8

Waiting for a few seconds, the printer gives out a hoot, which indicates that the printer has finished restarting and the modified program is over now.

If the user would like to continue modifying, enter new IP in the browser, and repeat operating the above steps, as showed in figure 9.

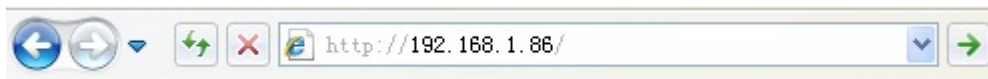


Figure 9